



Το Ορατό Φως είναι μια πολύ στενή περιοχή του ΗΛΜ φάσματος

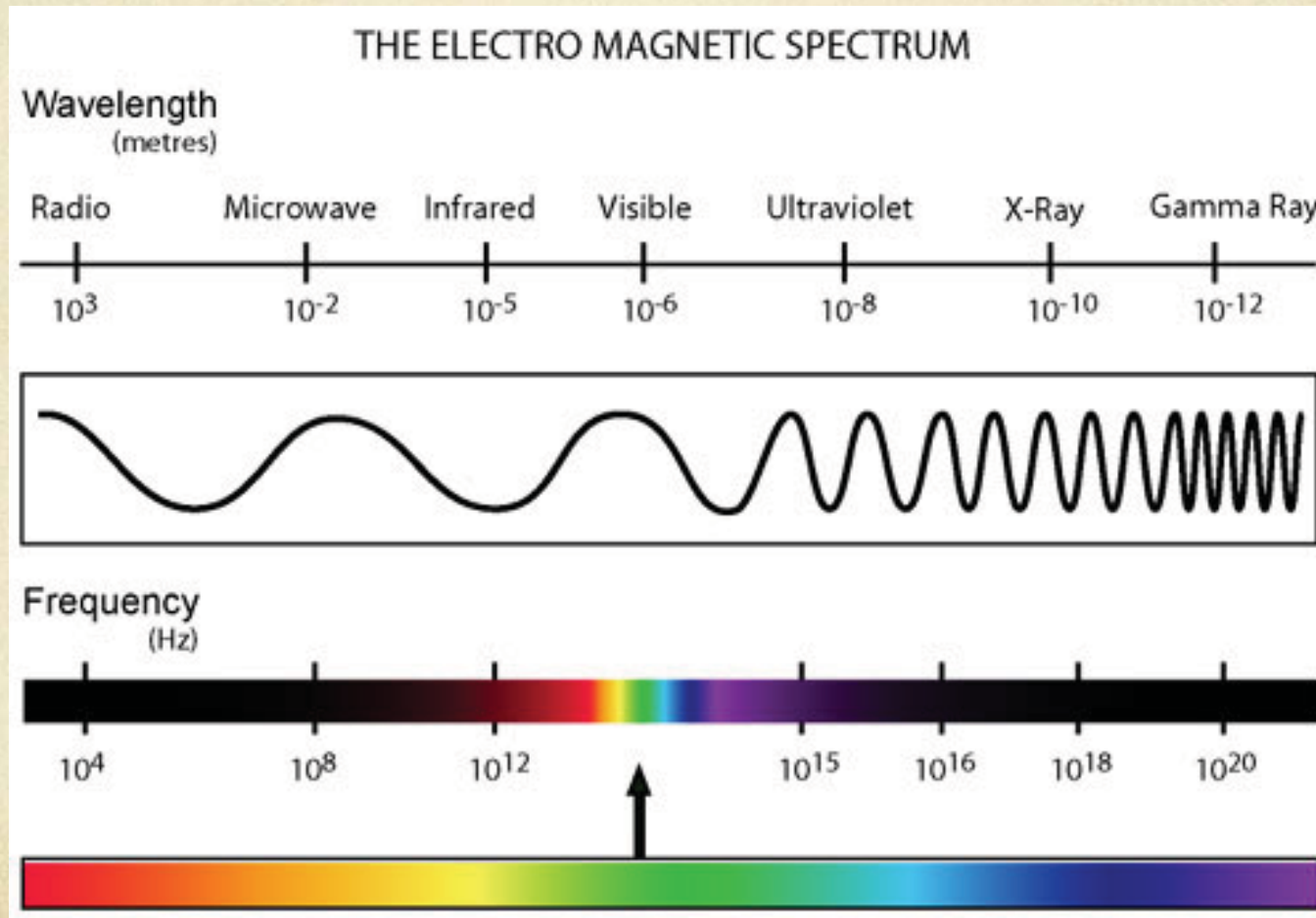
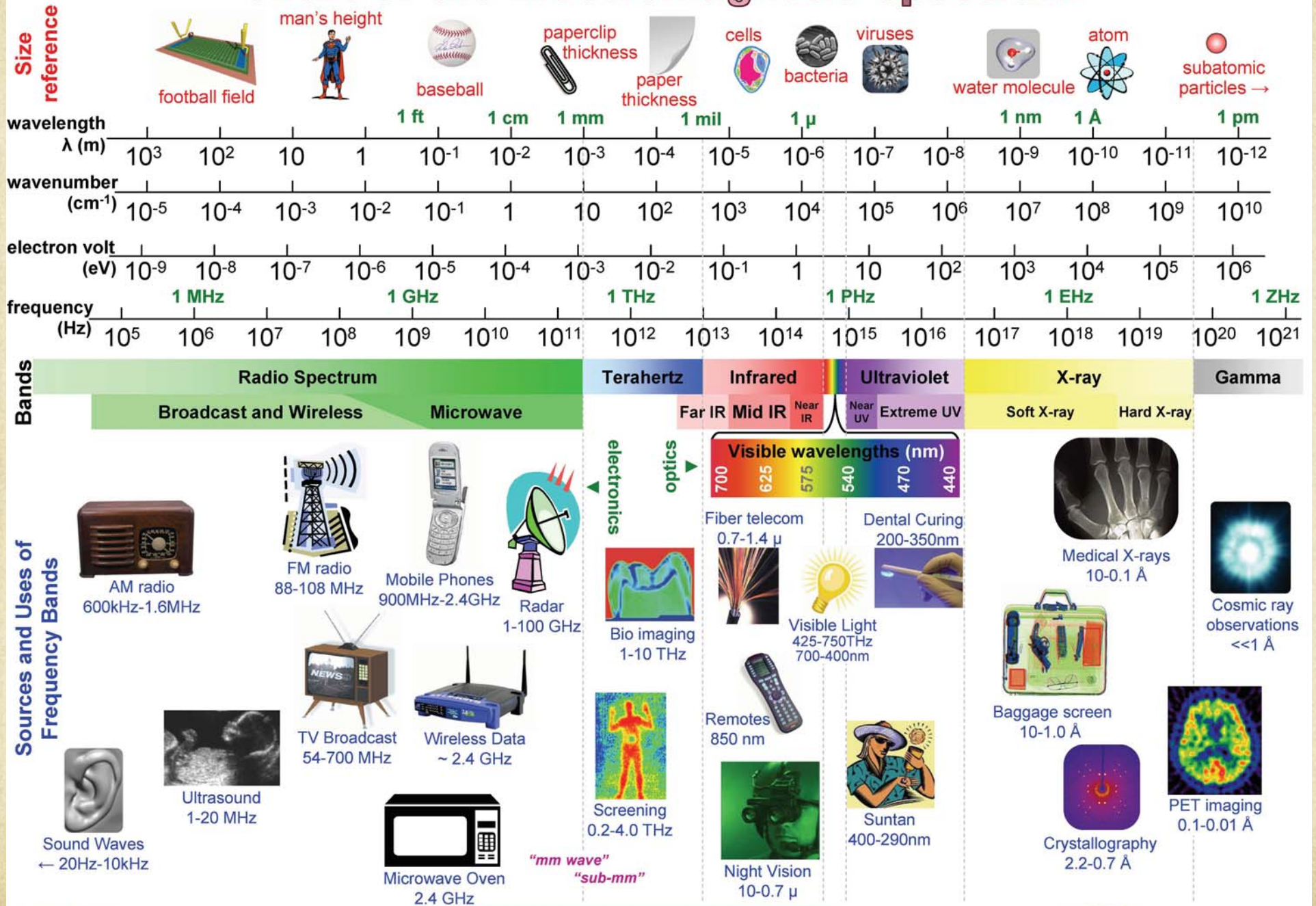
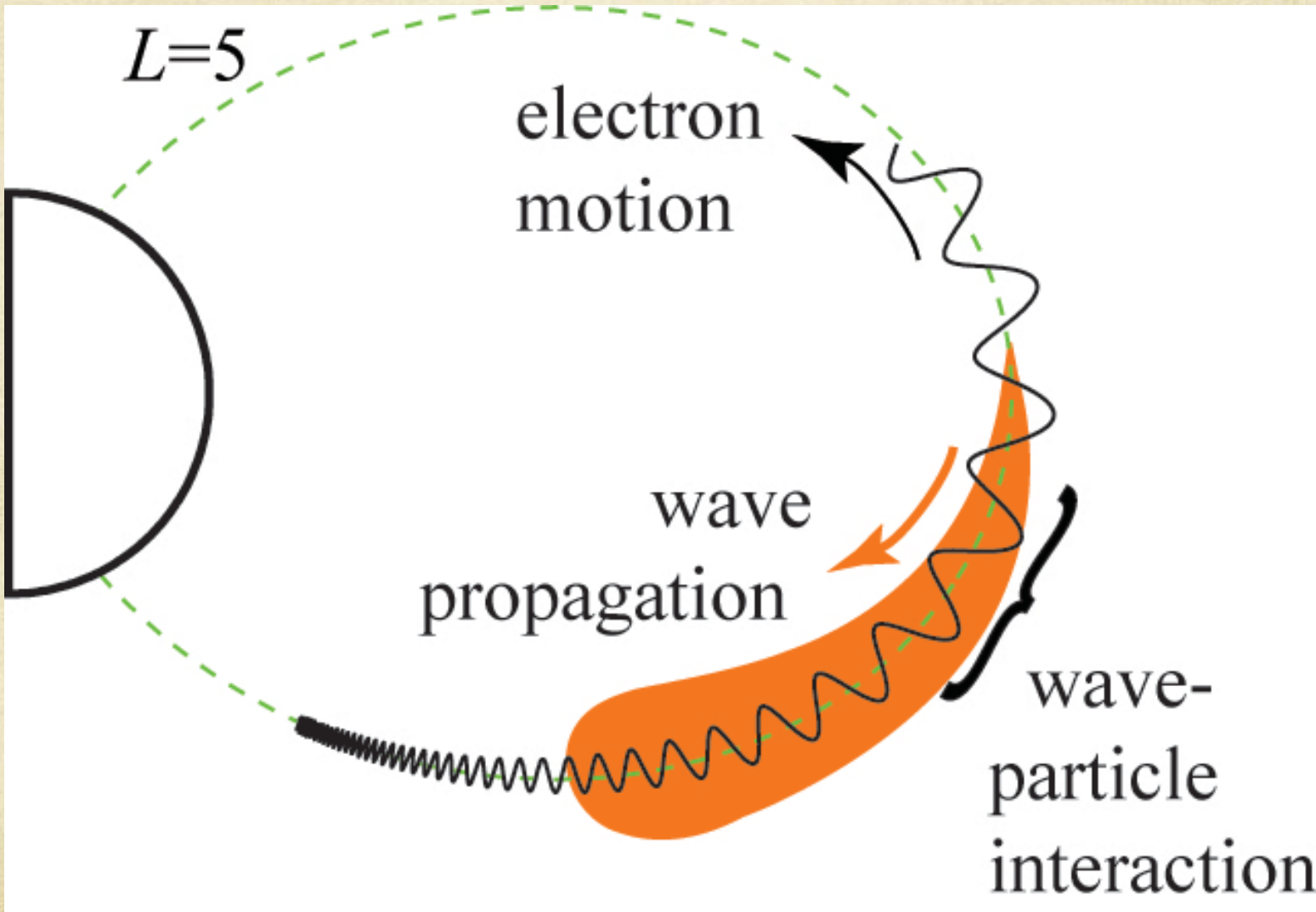


Chart of the Electromagnetic Spectrum

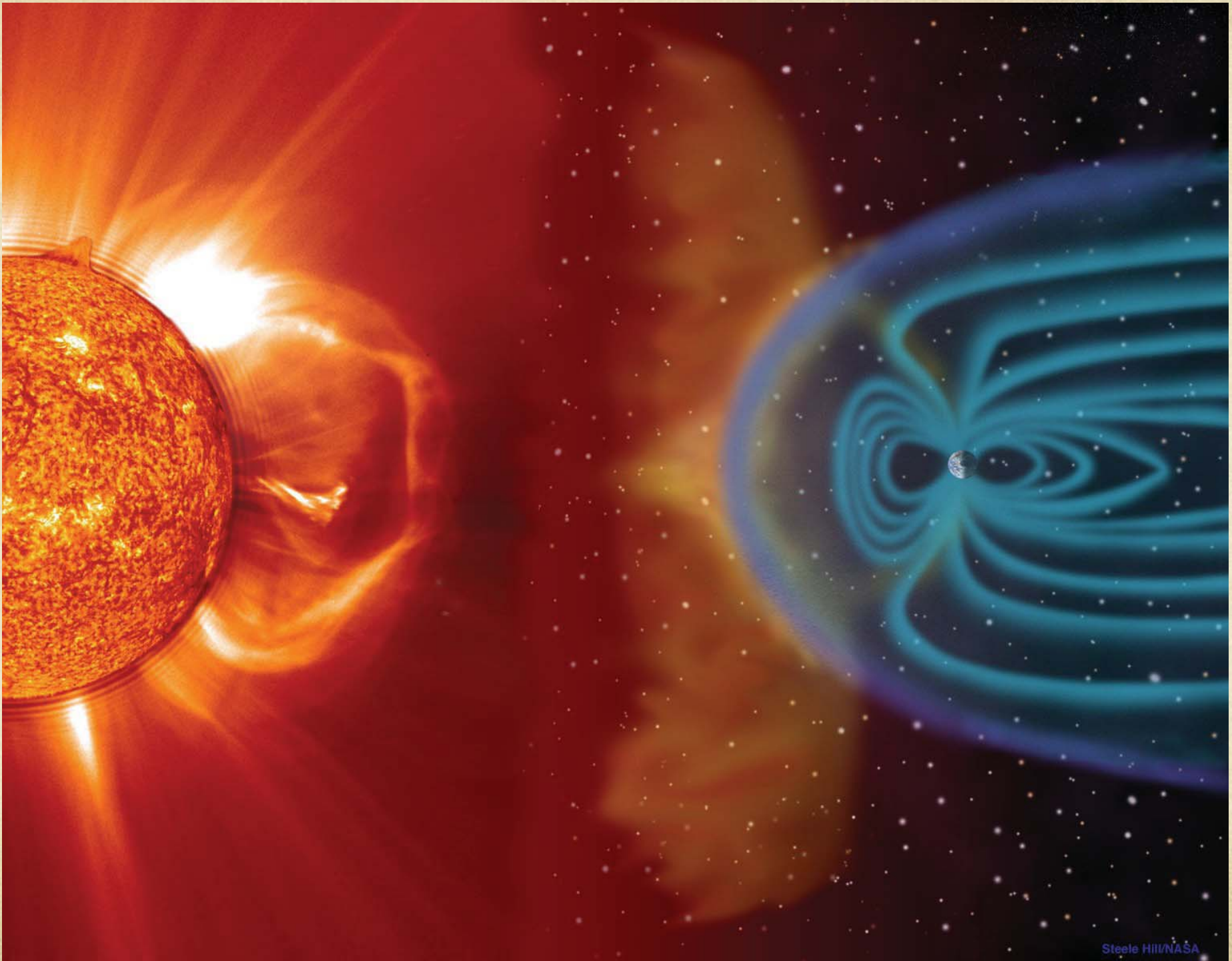


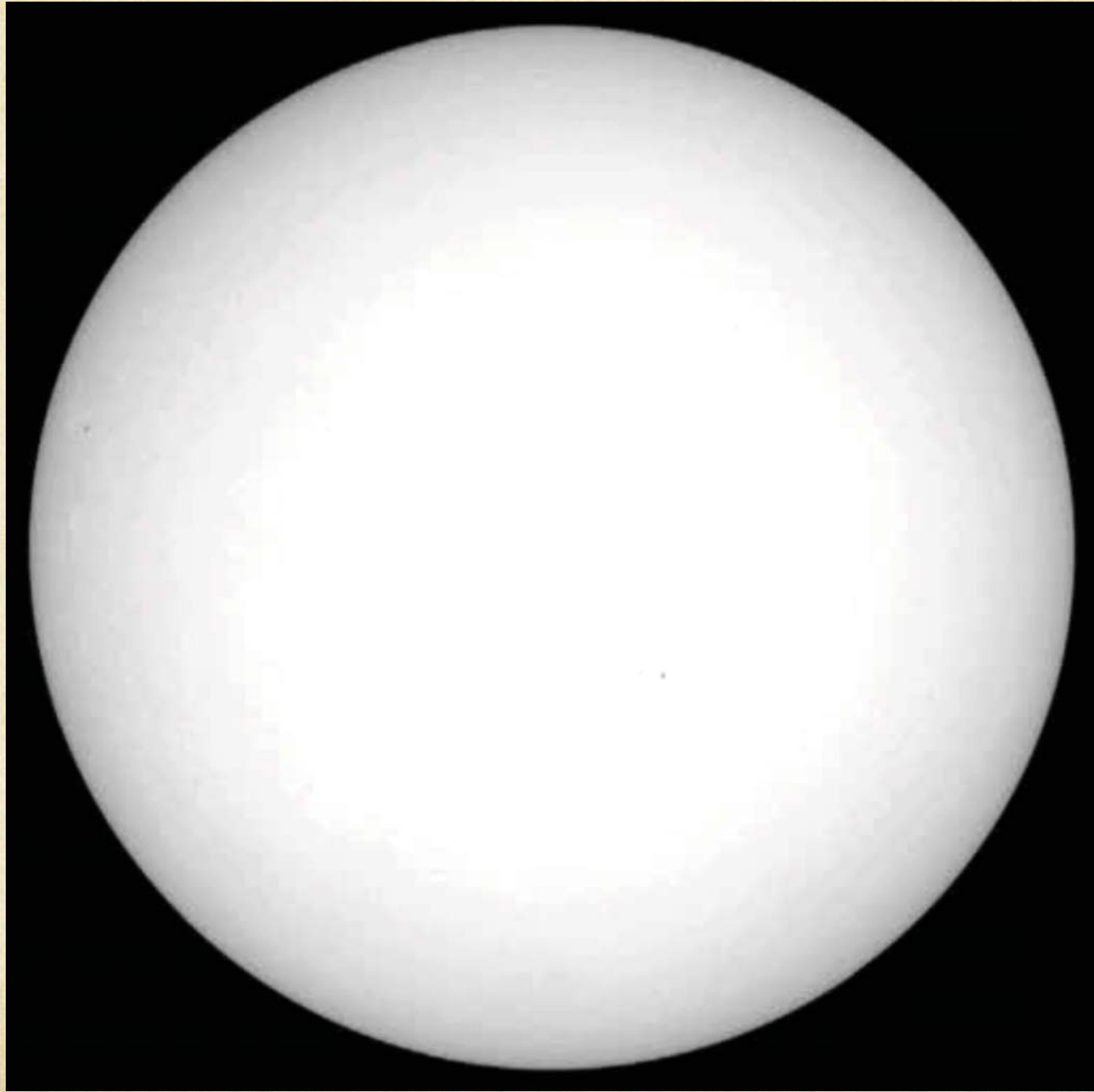
$$\lambda = 3 \times 10^8 / \text{freq} = 1 / (\text{wn} * 100) = 1.24 \times 10^{-6} / \text{eV}$$

Κύματα πολύ χαμηλής συχνότητας

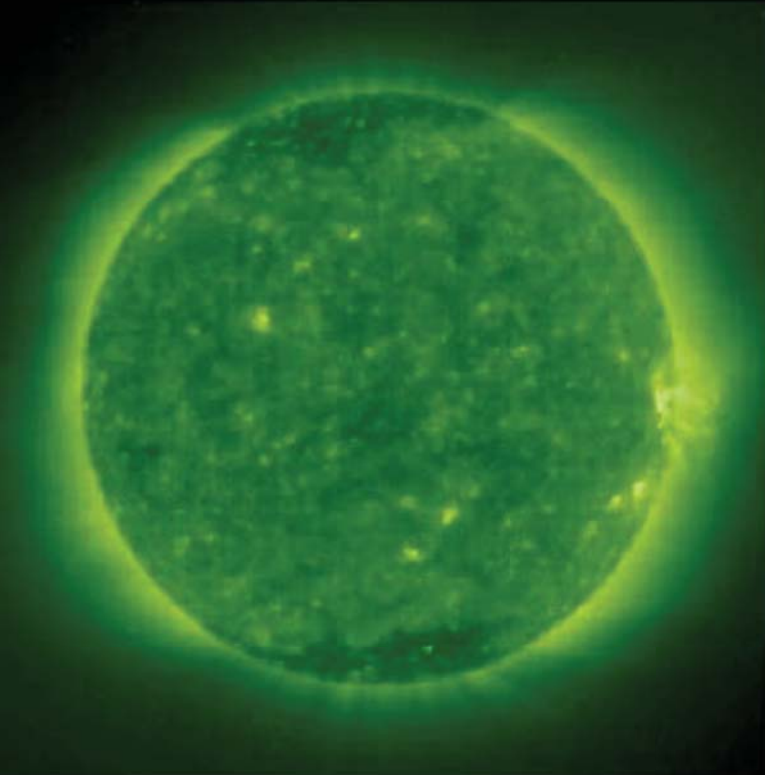




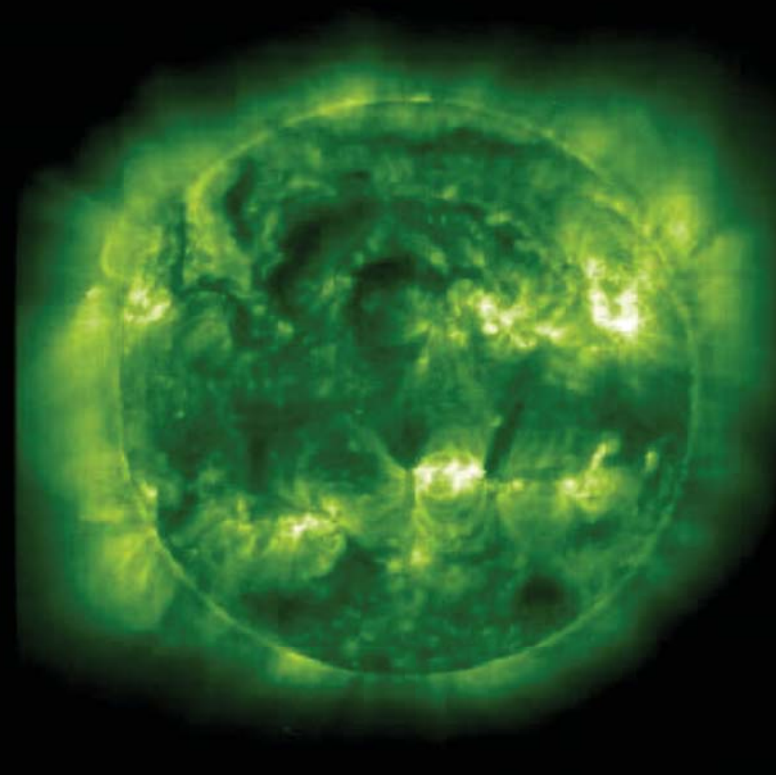




EIT 195 Å
Dec. 1996



EIT 195 Å
June 1999





Ήλιος και Γη



